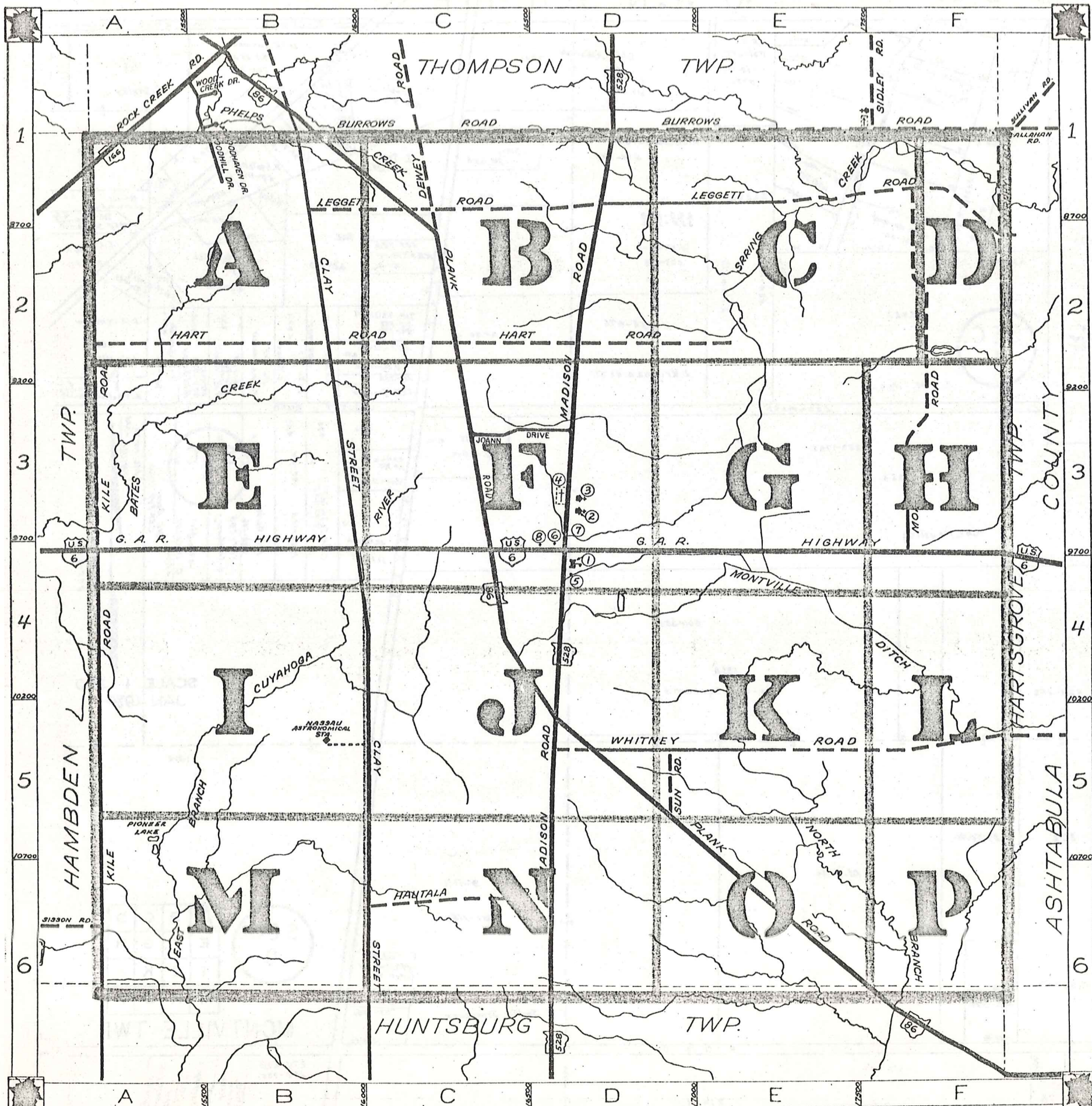


ROAD INDEX



A	I	R	ROCK CREEK RD.	A1
	J		JOANN DRIVE	C-3
B	K	S	BURROWS RD.	BI-F1
			KILE ROAD	A2-A6
			SUN ROAD	D5
C	L	T	CLAY STREET	BI-C6
			LEGGETT RD.	BI-F2
D	M	U	MADISON RD.	DI-D6
			MORGAN RD.	F1-F3
			MURPHY RD.	F1
E	N	V		
F	O	W	WHITNEY RD.	D5-F5
			WOODHILL DR.	B1
G	P	X	G.A.R. HIGHWAY	A4-F4
			PLANK ROAD	BI-F6
H	Q	Y	HART ROAD	A2-E2
			HAUTALA ROAD	C6
		Z		

- ① MONTVILLE ELEM. SCHOOL
- ② COMMUNITY CHURCH
- ③ MONTVILLE METHODIST CHURCH
- ④ MONTVILLE CEMETERY
- ⑤ MONTVILLE VOL. FIRE DEPT.
- ⑥ UNITED STATES POST OFFICE
- ⑦ MONTVILLE TOWN HALL
- ⑧ STATE HIGHWAY GARAGE (SUB STATION)

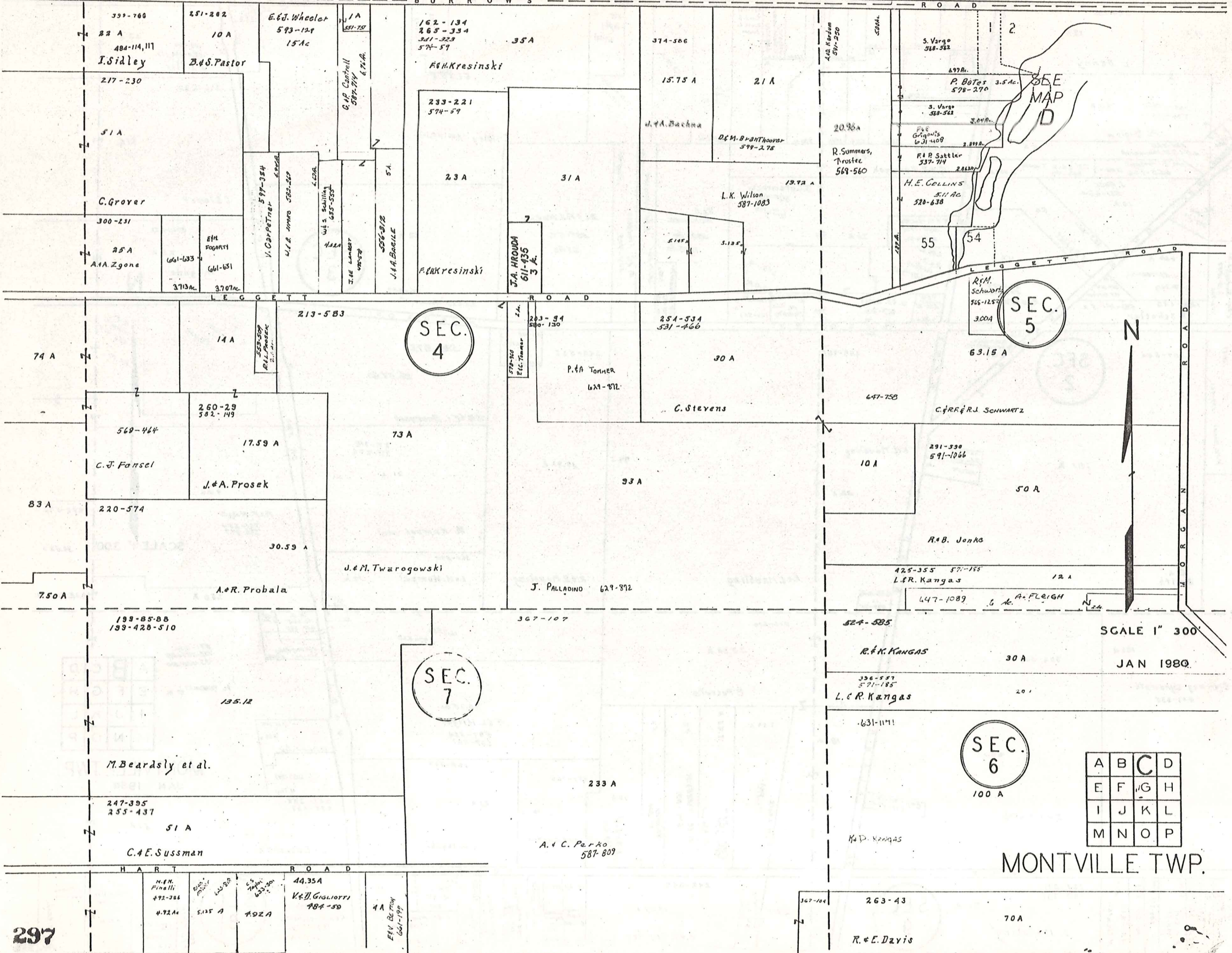
MONTVILLE TOWNSHIP

SCALE: 1" = 2000'

O. J. ROBINSON
GEAUGA COUNTY ENGINEER

--- UNPAVED ROADS --- TOWNSHIP LINE
 --- PAVED ROADS --- COUNTY LINE

T H O M P S O N T O W N S H I P



SEC. 4

SEC. 5

SEC. 7

SEC. 6

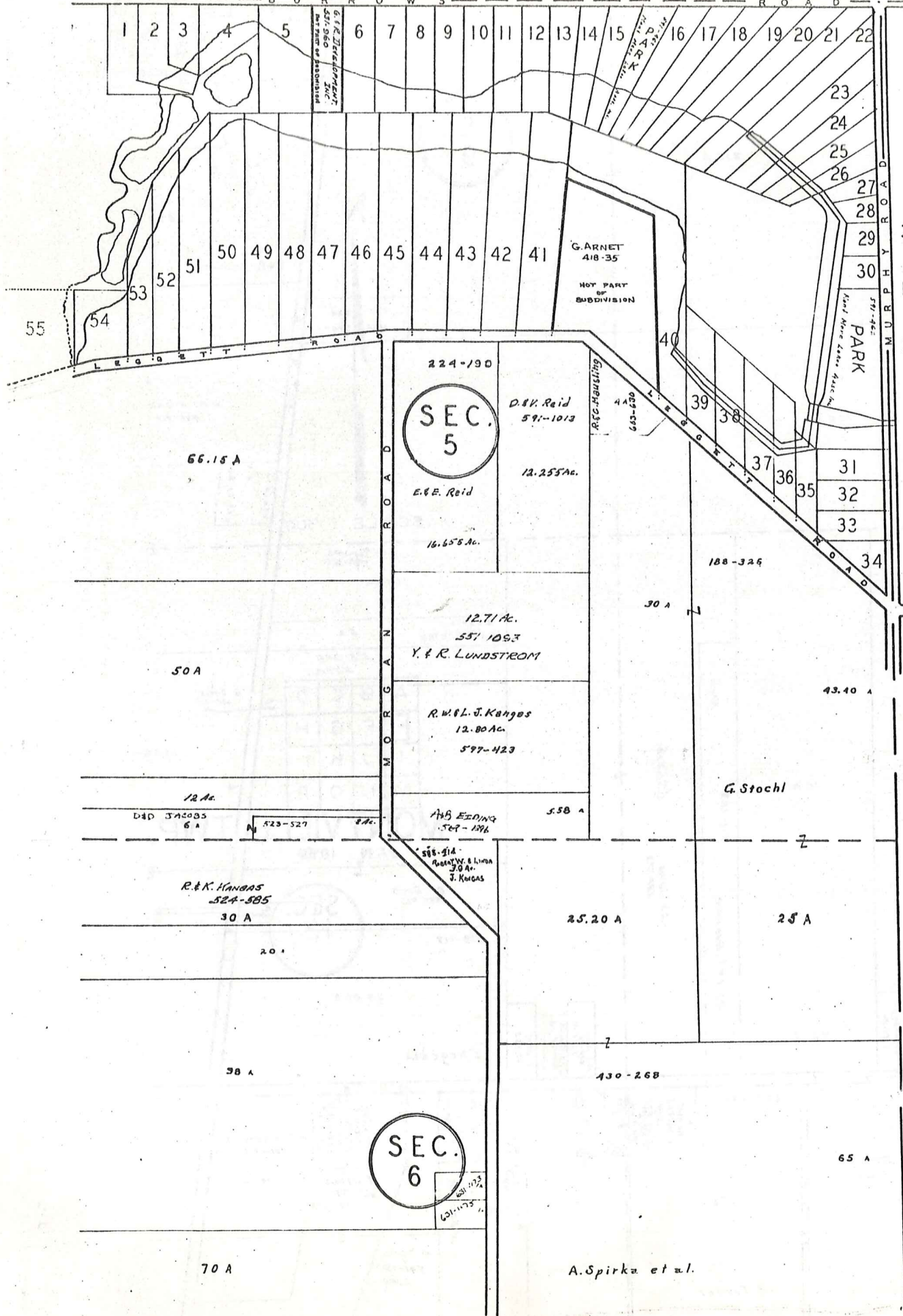
A	B	C	D
E	F	G	H
I	J	K	L
M	N	O	P

MONTVILLE TWP.

SCALE 1" 300'

JAN 1980

T H I L O M P S O N T O W N S H I P



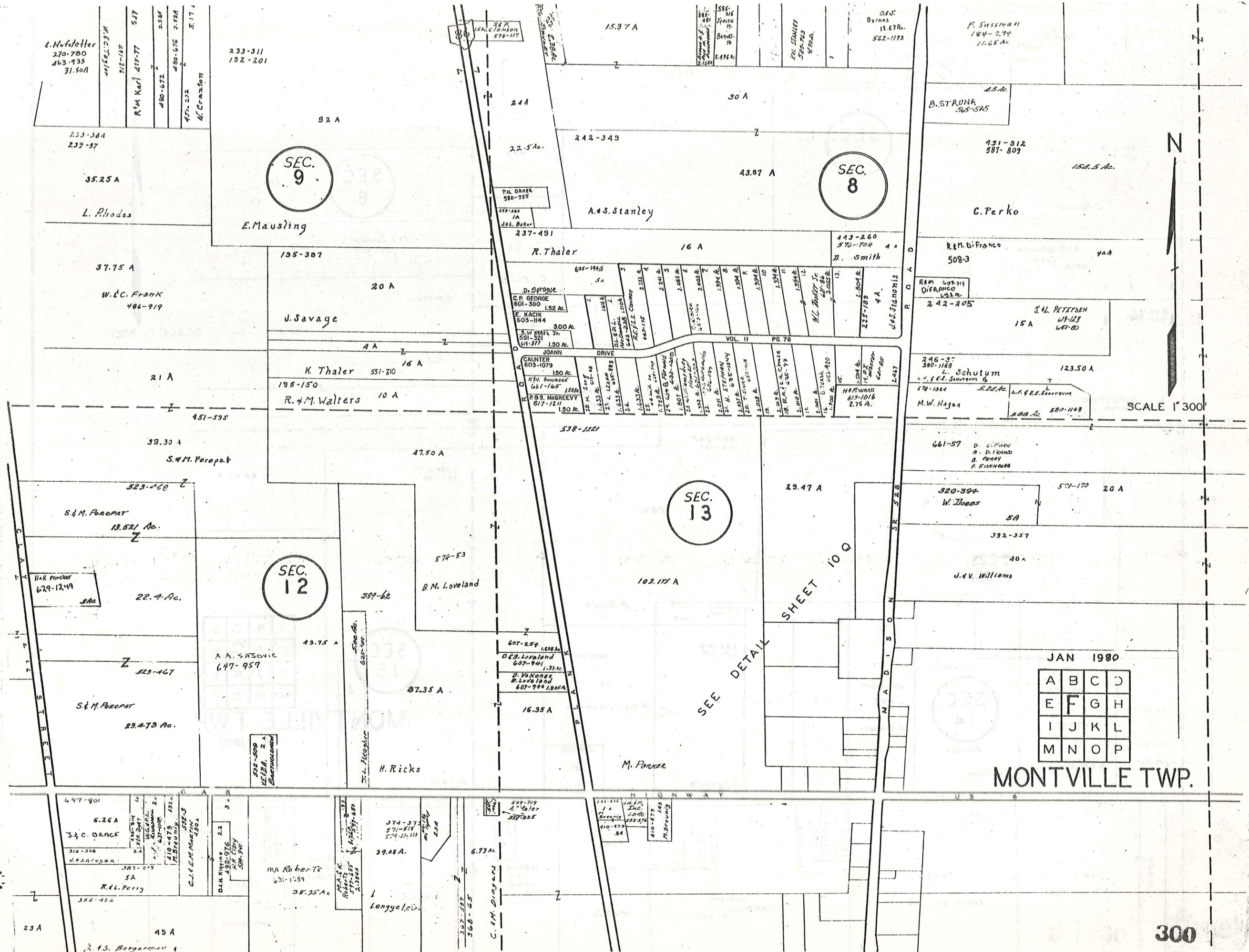
MONT-MERE COLONY
SUBDIVISION O.R.C. - VOL. 9 - Pgs. 96

1	J. K. Washington	587-1150
2	J. K. Washington	587-1150
3	J. K. Washington	587-1150
4	B. A. Marcelline	587-242
5	G. F. S. SubAC	587-1020
6		
7	J. K. Washington	587-1150
8	K. J. T. T. T. T. T. T.	621-242
9	E. D. M. M. M. M. M.	530-525
10	J. B. C. T. T. T. T. T.	574-225
11	S. & C. Lipka	617-340
12	C. L. L. L. L. L.	523-004
13	L. L. L. L. L. L.	631-222
14	J. S. V. V. V. V. V.	633-500
15	J. W. S. S. S. S. S.	582-310
16	W. L. L. L. L. L.	582-376
17	R. G. G. G. G. G.	633-525
18	R. B. U. U. U. U. U.	589-1059
19	J. J. S. S. S. S. S.	653-601
20	G. L. S. S. S. S. S.	580-813
21	F. & E. W. W. W.	617-386
22		
23		
24	R. & D. C. C. C. C.	540-312
25		
26	T. & D. F. F. F. F.	
27	G. M. M. M. M. M.	633-1052
28	J. E. Z. Z. Z. Z. Z.	653-1010
29	R. E. S. S. S. S. S.	603-1064
30	J. & F. S. S. S. S.	576-227
31	J. & E. S. S. S. S.	556-267
32	A. J. M. M. M. M. M.	643-914
33	J. G. G. G. G. G.	564-498
34	R. L. L. L. L. L.	530-080
35	W. A. S. S. S. S. S.	647-347
36	E. J. P. P. P. P. P.	647-349
37	R. & F. G. G. G. G.	625-123
38	S. F. F. F. F. F.	631-317
39	J. & G. K. K. K. K. K.	633-913
40	S. T. T. T. T. T.	577-427
41		
42	D. & E. K. K. K. K. K.	538-1203
43	R. & M. K. K. K. K. K.	597-342
44	H. & N. S. S. S. S. S.	593-1208
45	D. F. F. F. F. F.	604-378
46	" " " " " "	" " " " "
47	J. A. T. T. T. T. T.	653-308
48	C. & D. M. M. M. M. M.	580-116
49	R. B. D. D. D. D. D.	571-027
50	R. R. M. M. M. M. M.	644-337
51	D. & D. J. J. J. J. J.	578-1144
52	R. B. T. T. T. T. T.	557-076
53	S. T. T. T. T. T.	577-427
54	J. & O. K. K. K. K. K.	588-828
55	L. & P. W. W. W. W. W.	621-1017



SCALE 1" = 300'
JAN 1989

A	B	C	D
E	F	G	H
I	J	K	L
M	N	O	P



SEC. 9

SEC. 8

SEC. 13

SEC. 12

JAN 1980

A	B	C	D
E	F	G	H
I	J	K	L
M	N	O	P

MONTVILLE TWP.

SCALE 1" = 300'

SEE DETAIL SHEET 10 Q

L. Hofstetter
270-780
463-935
31.50A

233-311
192-201

233-384
239-37

35.25 A

L. Rhodes

37.75 A

W.C. Frank
406-919

21 A

451-595

39.30 A
S.M. Poropat

523-268

S.M. Poropat
13.521 Ac.

H.K. Procker
679-1249
3Ac

22.4 Ac.

523-467

S.M. Poropat
23.473 Ac.

A.A. Sazonic
647-957

49.75 A

87.35 A

H. Ricks

647-901

6.26 A
J.C. Orace

316-396
U.S. Grogan

387-219
5A
R.L. Perry

352-452

410-479
M. Breunig

512-3
C.J.E. Martin

480-480

482-976
D.M. King

480-480
M. Roberts

MA Roberts
631-1259
38.25 A

374-37
571-818
574-1111

39.08 A

L. Lengyel

509-719
A. Walter
357-225

6.73 A

C.M. Dingers

362-527
368-65

410-479
M. Breunig

410-479
M. Breunig

410-479
M. Breunig

410-479
M. Breunig

410-479
M. Breunig

607-254
D.S. Loveland

607-941
D. Vokonas

607-942
1.73 Ac

16.35 A

M. Ponce

607-254
1.038 Ac

607-941
1.73 Ac

607-942
1.855 A

16.35 A

16.35 A

16.35 A

16.35 A

16.35 A

16.35 A

16.35 A

16.35 A

16.35 A

16.35 A

16.35 A

16.35 A

16.35 A

16.35 A

16.35 A

16.35 A

16.35 A

16.35 A

16.35 A

16.35 A

16.35 A

16.35 A

16.35 A

16.35 A

16.35 A

16.35 A

16.35 A

16.35 A

16.35 A

16.35 A

16.35 A

16.35 A

16.35 A

16.35 A

16.35 A

16.35 A

16.35 A

16.35 A

16.35 A

16.35 A

16.35 A

16.35 A

16.35 A

16.35 A

16.35 A

16.35 A

16.35 A

16.35 A

16.35 A

16.35 A

16.35 A

16.35 A

16.35 A

16.35 A

16.35 A

16.35 A

16.35 A

16.35 A

16.35 A

16.35 A

16.35 A

16.35 A

16.35 A

16.35 A

16.35 A

16.35 A

16.35 A

16.35 A

16.35 A

16.35 A

16.35 A

16.35 A

16.35 A

16.35 A

16.35 A

16.35 A

16.35 A

16.35 A

16.35 A

16.35 A

16.35 A

16.35 A

16.35 A

16.35 A

16.35 A

16.35 A

16.35 A

16.35 A

16.35 A

16.35 A

16.35 A

16.35 A

16.35 A

16.35 A

16.35 A

16.35 A

16.35 A

16.35 A

16.35 A

16.35 A

16.35 A

16.35 A

16.35 A

16.35 A

16.35 A

16.35 A

16.35 A

16.35 A

16.35 A

16.35 A

16.35 A

16.35 A

16.35 A

16.35 A

16.35 A

16.35 A

16.35 A

16.35 A

16.35 A

16.35 A

16.35 A

16.35 A

16.35 A

16.35 A

16.35 A

16.35 A

16.35 A

16.35 A

16.35 A

16.35 A

16.35 A

16.35 A

16.35 A

16.35 A

16.35 A

16.35 A

16.35 A

16.35 A

16.35 A

16.35 A

16.35 A

16.35 A

16.35 A

16.35 A

16.35 A

16.35 A

16.35 A

16.35 A

16.35 A

16.35 A

16.35 A

16.35 A

16.35 A

16.35 A

16.35 A

16.35 A

16.35 A

16.35 A

16.35 A

16.35 A

16.35 A

16.35 A

16.35 A

16.35 A

16.35 A

16.35 A

16.35 A

16.35 A

16.35 A

16.35 A

16.35 A

16.35 A

16.35 A

16.35 A

16.35 A

16.35 A

16.35 A

16.35 A

16.35 A

16.35 A

16.35 A

16.35 A

16.35 A

16.35 A

16.35 A

16.35 A

16.35 A

16.35 A

16.35 A

16.35 A

16.35 A

16.35 A

16.35 A

16.35 A

16.35 A

16.35 A

16.35 A

16.35 A

16.35 A

16.35 A

16.35 A

16.35 A

16.35 A

16.35 A

16.35 A

16.35 A



SCALE 1" = 300'

SEC. 7

SEC. 6

SEC. 15

A	B	C	D
E	F	G	H
I	J	K	L
M	N	O	P

MONTVILLE TWP
JAN 1980

484-59
V+D Gigholli
492+A
5125A
KM
Dredging
25-57
EM BROWN
661-197
661-1A

367-107
587-809

263-43

70 A

233A

R+E.Davis

131-212
587-809
1545 A

C. PERKO

R&M DiFranco
40.A. 508-3

A.C. Perko

C. Perko

J+Y. Calendine
587-600

246-37
580-1166

± 123.50 A

L. Schuitrum
L.F. & E.E. SANITAVI 1/2

H. Pierman
617-166

G. Brown

277-245
512-148

243-417
361-39

562-408

63.55 A

20 A

108.14 A

50 A

661-57
D. DiFore
A. DiFranco
B. PENNY
P. Eisenberg

B. Moore

451-447
512-148
288

260-418
657-385

464-104

20 A

M. DeJank & F. Omehen

SEC. 14

524-1059
20 A

631-1058

15 A

11.12 A

A. Daniels
A. JERRY

558-682
5 A
H.L.D.J.
FERGANNIN

J. Card

25.24 Ac.

25.37 Ac.

571-907

571-905
A&M. Rot

A&M. Kozalj

571-909
J&M. Jarc

J.C. OPATRYNY

S. Prathapas

SEE DETAIL
SHEET 10 Q

301

50 A

70.57 A

L.H.N.K. Olrzalik

229-40
477-806 2A
J.Y. Sember
303-747149
E.M. ARNOCKI

463-330
G.R.K. BLUM
70.45 A

556-695
643-689

35 A

M.J. ROSS

492-512
40 A
607-658

S. DITTEL

454-307
F&M. McKeon
66.38 Ac.

E.F. WEBER
524-264
67.358 Ac.

30.29 Ac.

S. Ziegler

459-102, 114

J. Ziegler
22.8
21-122

E.S. Kuster
22.8
21-122

263-43

SEC. 6

220-374

70 A

65 A

R. & E. Davis

F. & A. Spirka

40 A

35 A

R. & X. GARDNER

5AC.

J. V. Colandine
631-1278

431-607

L. B. PIENSKI

40 A

270-465
502-04

6 A

G. P. Heller

T. B. HEPTMA

303AC

418-993

50 A

G. Brown

8.50 A

48.44 A

M. & G. Trask

463-269
574-857
601-322
647-252

11.44 A

G. M. TRASK

H. Pierman
617-921

2.58 AC.

188-240

617-166

50 A

63.55 A

H. Pierman

C. Pierman
617-923

2.58 AC.

A. Erben

H. Stoltz II
565-106

D. L. STOLTZ
611-484

2

234-318

3.25 A

5A
469-778
J. A. Majka

237-455
W. J. Dombrowski

431-555

206-412

Jos Sinkovec
574-624

17.3 AC.

174-622

43 A

15 A

15 A

39.75 A

20 A

17.3 AC.

24.34 AC.

J. H. Masorella S.S.A.

J. H. Masorella S.S.A.

J. H. Masorella S.S.A.

J. H. Masorella S.S.A.

J. H. Masorella S.S.A.

J. H. Masorella S.S.A.

J. H. Masorella S.S.A.

J. H. Masorella S.S.A.

J. H. Masorella S.S.A.

J. H. Masorella S.S.A.

J. H. Masorella S.S.A.

J. H. Masorella S.S.A.

J. H. Masorella S.S.A.

J. H. Masorella S.S.A.

J. H. Masorella S.S.A.

J. H. Masorella S.S.A.

J. H. Masorella S.S.A.

J. H. Masorella S.S.A.

J. H. Masorella S.S.A.

J. H. Masorella S.S.A.

J. H. Masorella S.S.A.

E. I. Bosse

K. N. Kiparski

452-488

M. Lankford

D. Geisman

427-70

138 A

M. B. Cujanovic
589-170

596-367

238 AC.

C. Vessl

SEC. 15

399-1012

P. Bernardelli

312-457-8
637-959

12 A

50 A

W. Masung

367-417
382-345

24.71 A

S. Zadnik

O. Lozano & R. Kuznac
444-591, 595
412-527

C O U N T Y
A B U L A
A S H T A B U L A

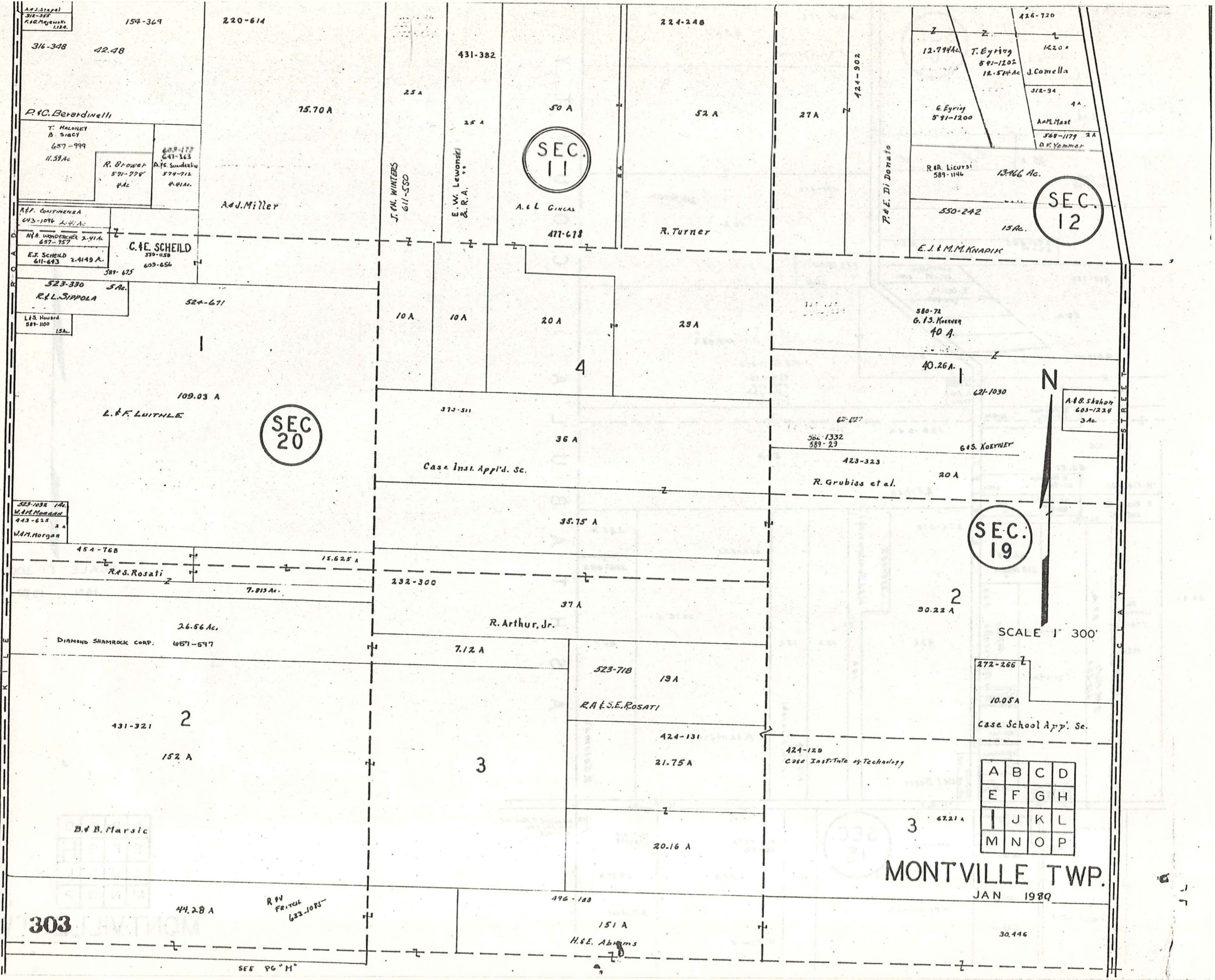


SCALE 1" = 300'
JAN 1980

A	B	C	D
E	F	G	H
I	J	K	L
M	N	O	P

302
MONTVILLE TWP.

H A M B D E N T O W N S H I P



MONTVILLE TWP.
JAN 1980

A	B	C	D
E	F	G	H
I	J	K	L
M	N	O	P

303

SEE PG "H"

SEC. 12

SEC. 13

SEC. 18

SEC. 19

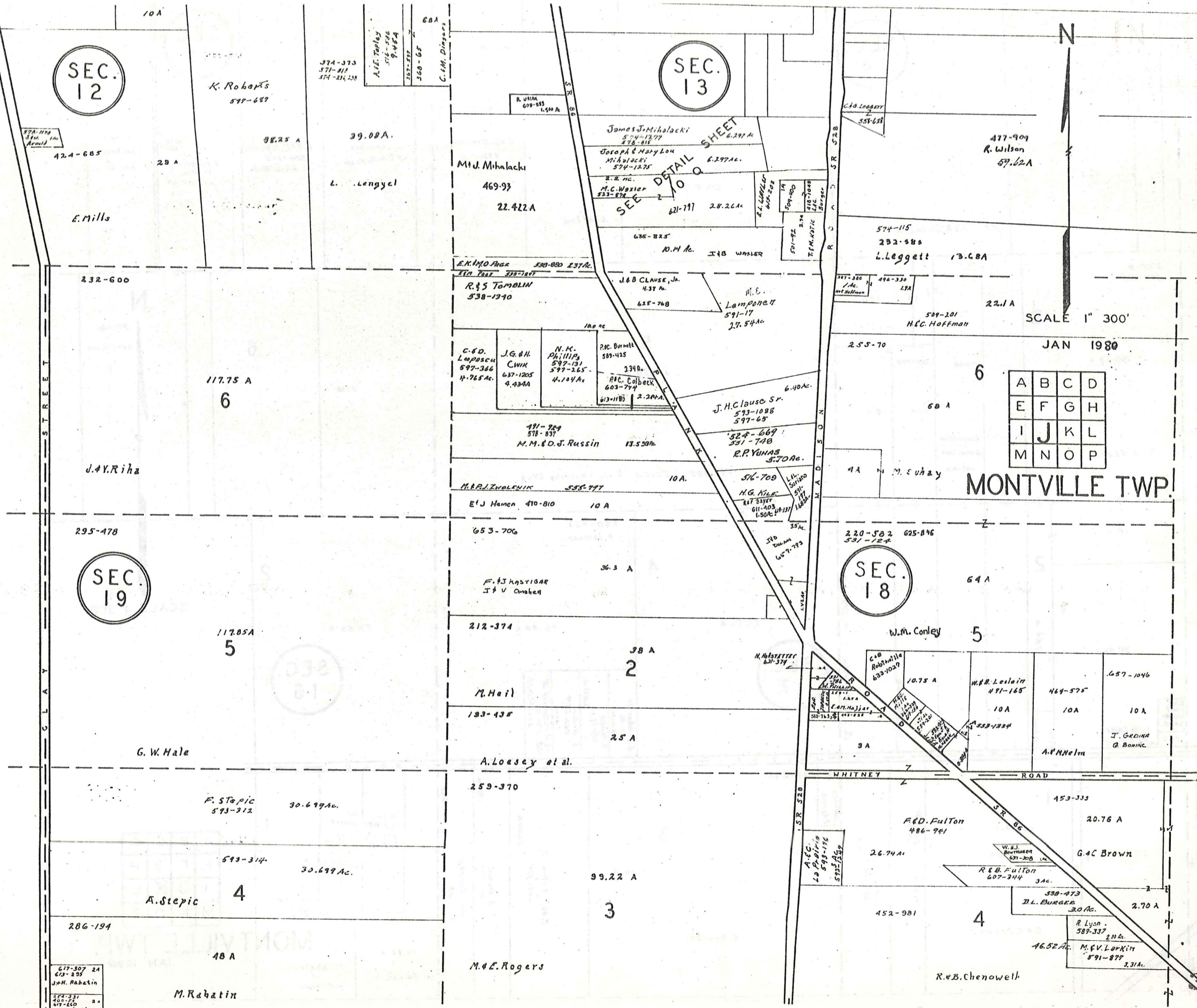
SECTION DETAIL SHEET
10 Q

SCALE 1" = 300'

JAN 1980

A	B	C	D
E	F	G	H
I	J	K	L
M	N	O	P

MONTVILLE TWP.



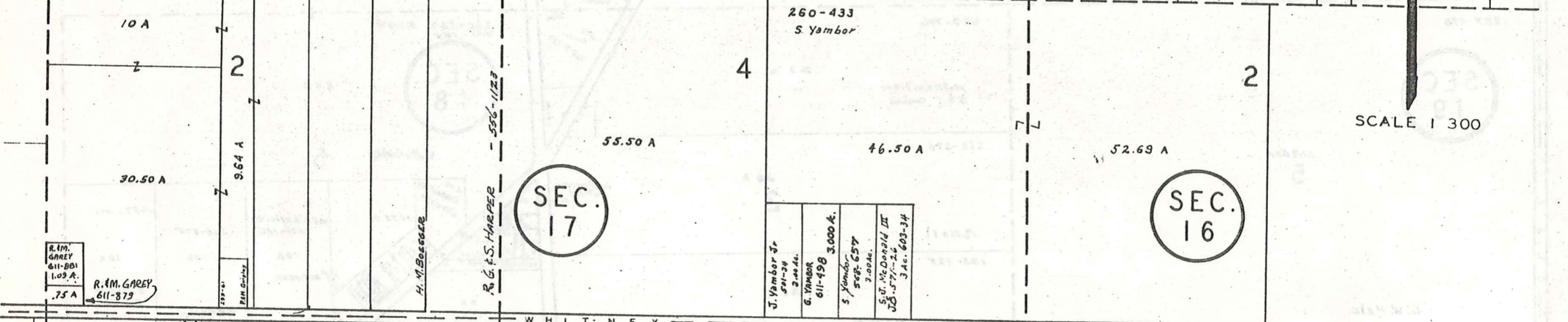
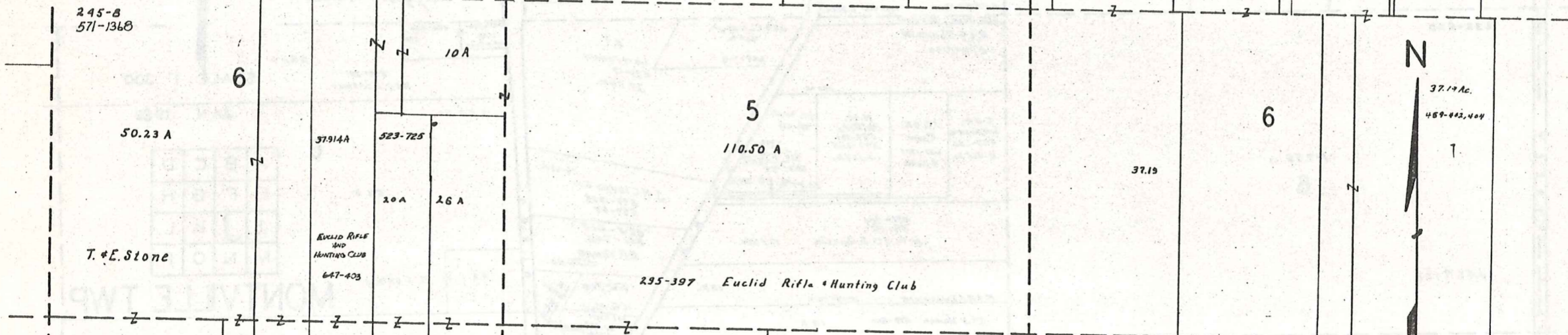
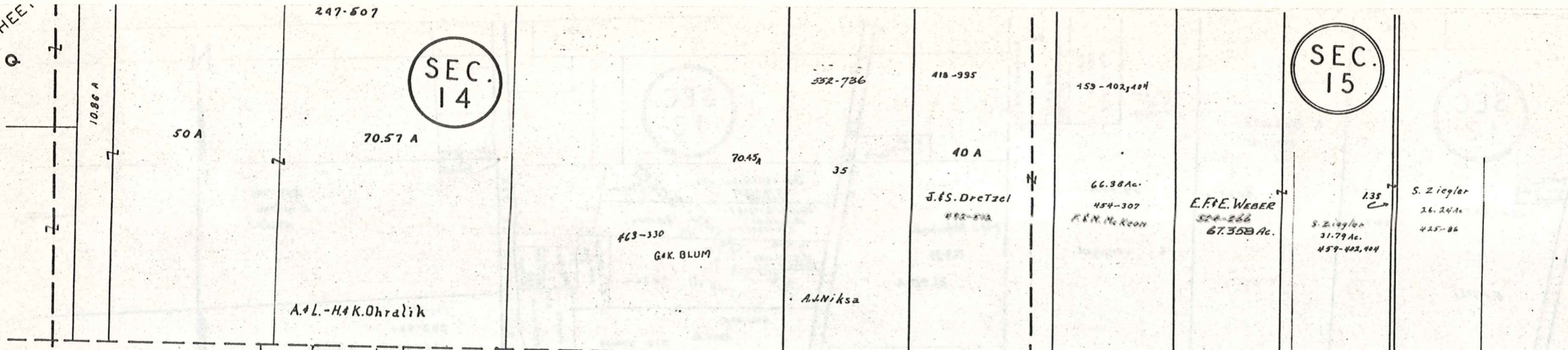
677-307 24
673-235
J. & M. Rabatin

SEE
DETAIL SHEET
10 Q

247-507

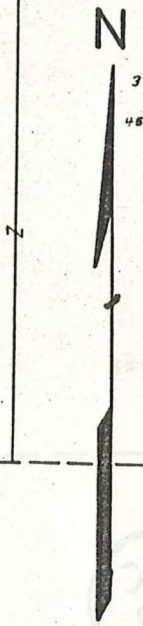
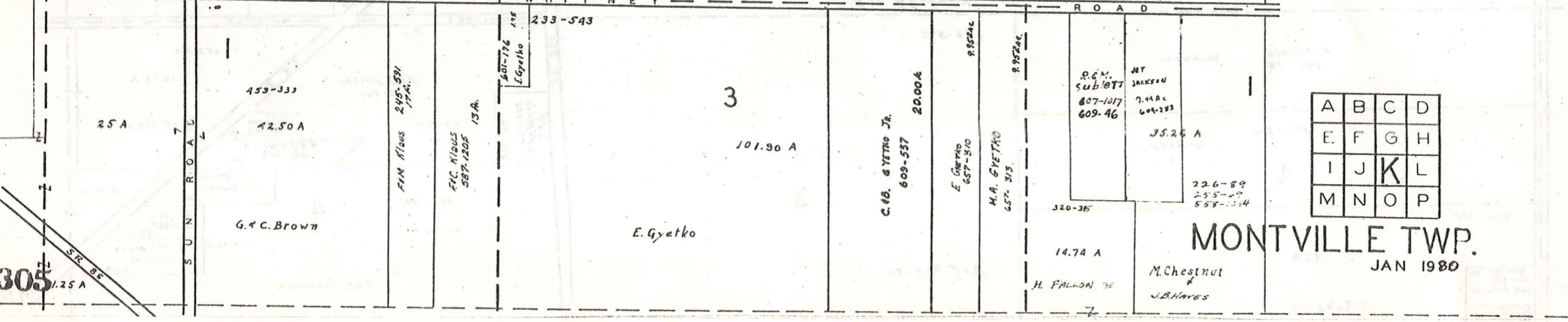
SEC.
14

SEC.
15



SEC.
17

SEC.
16

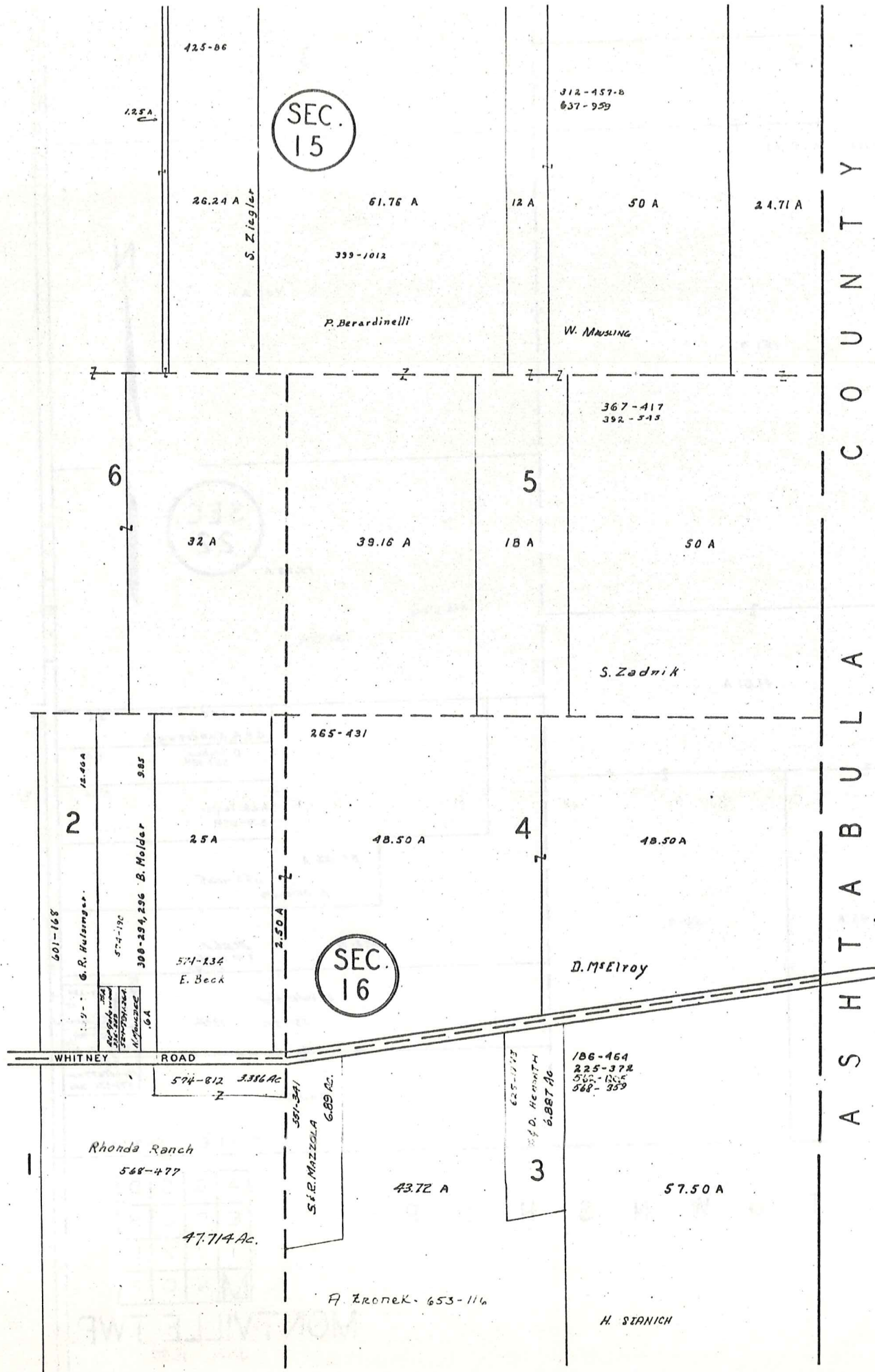


SCALE 1 300

A	B	C	D
E	F	G	H
I	J	K	L
M	N	O	P

MONTVILLE TWP.
JAN 1980

305



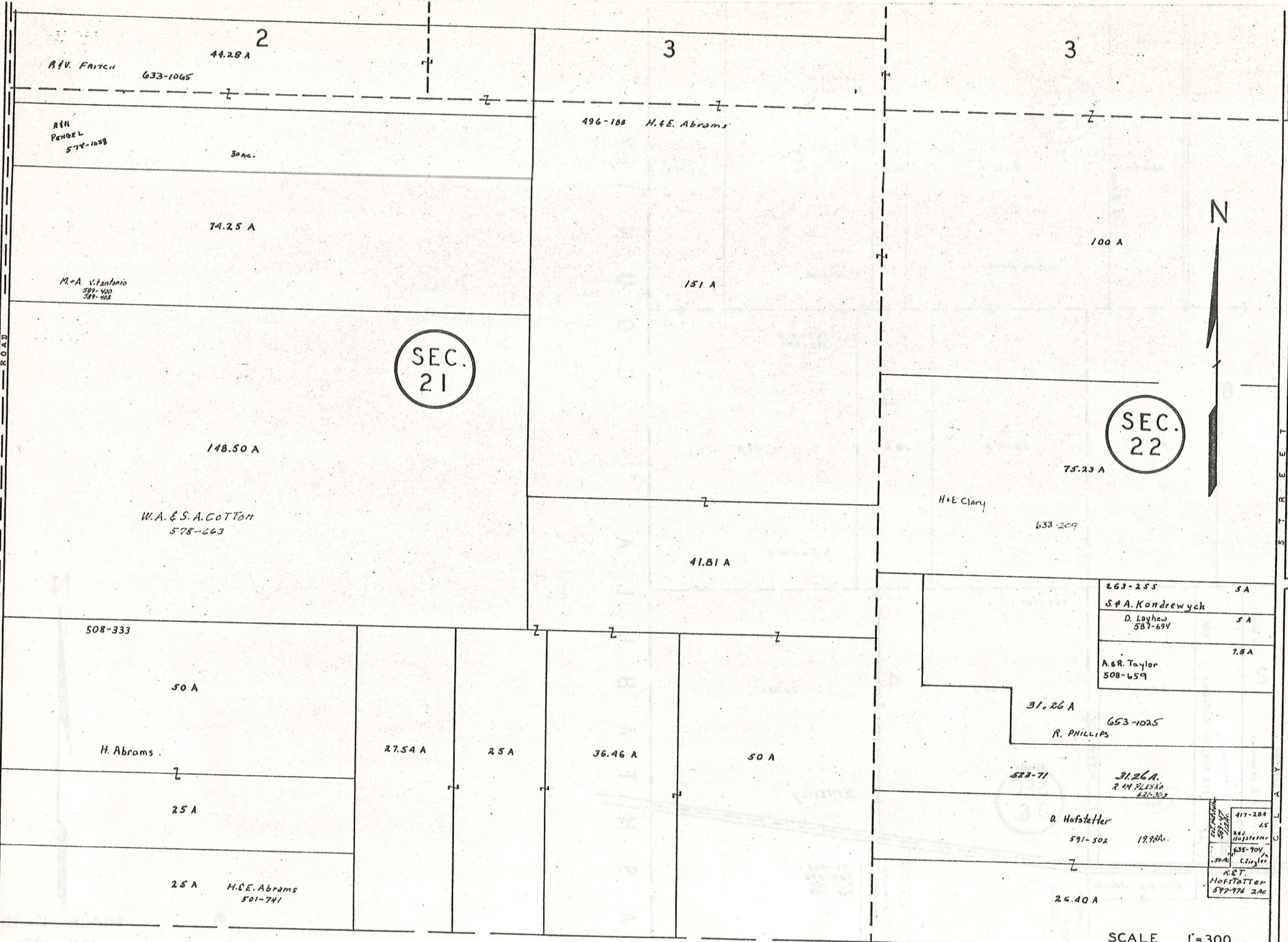
SCALE 1"=300'
JAN 1980

A	B	C	D
E	F	G	H
I	J	K	L
M	N	O	P

306
MONTVILLE TWP.

H A M B D E N T O W N S H I P

1/2 MILE ROAD



SEC. 21

SEC. 22

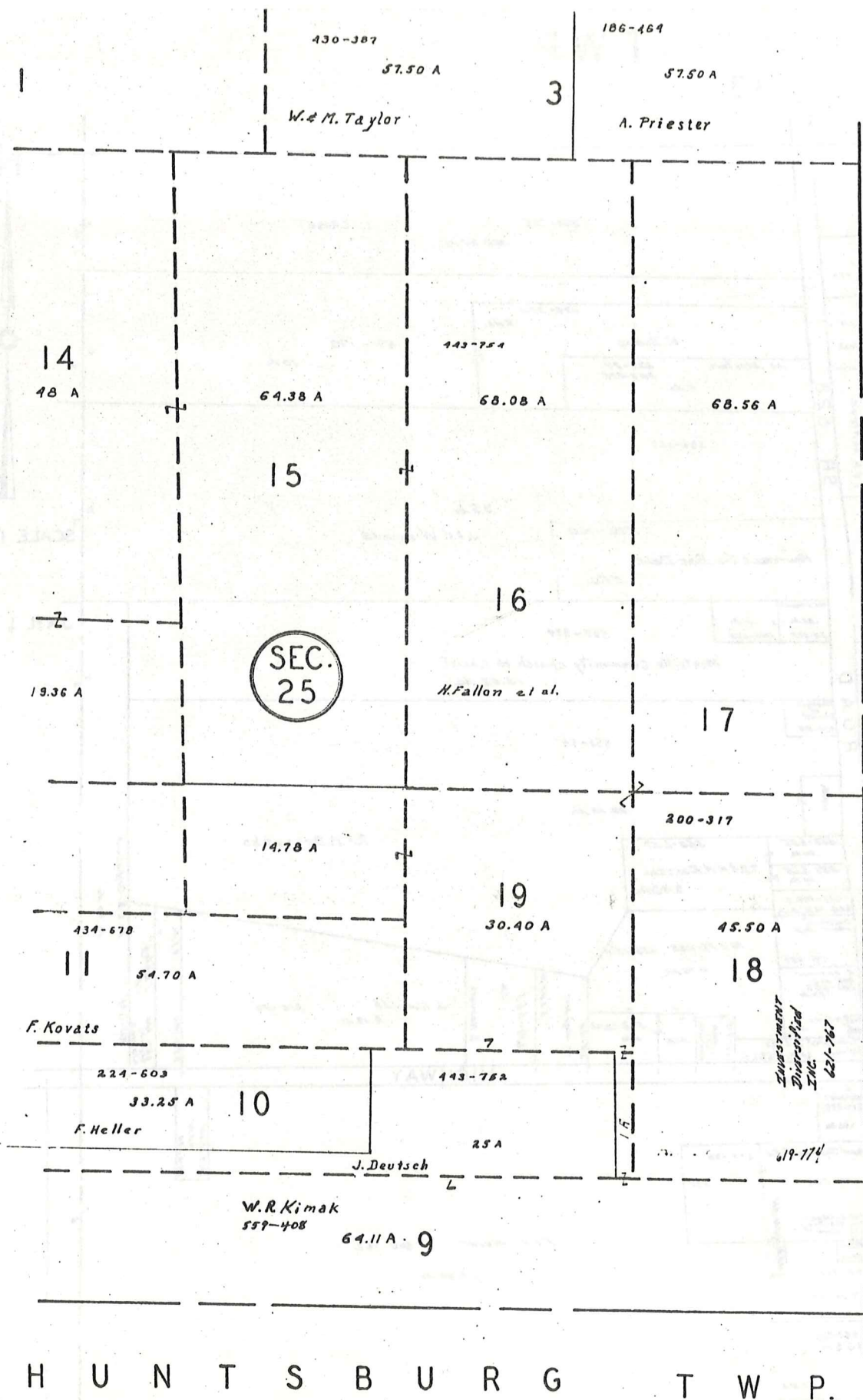


SCALE 1"=300

H U N T S B U R G T O W N S H I P

A	B	C	D
E	F	G	H
I	J	K	L
M	N	O	P

MONTVILLE TWP.
JAN 1980



MONTVILLE
 COUNTY
 A
 S
 H
 T
 A
 B
 U
 L
 A
 C
 O
 U
 N
 T
 Y

H U N T S B U R G T W P.

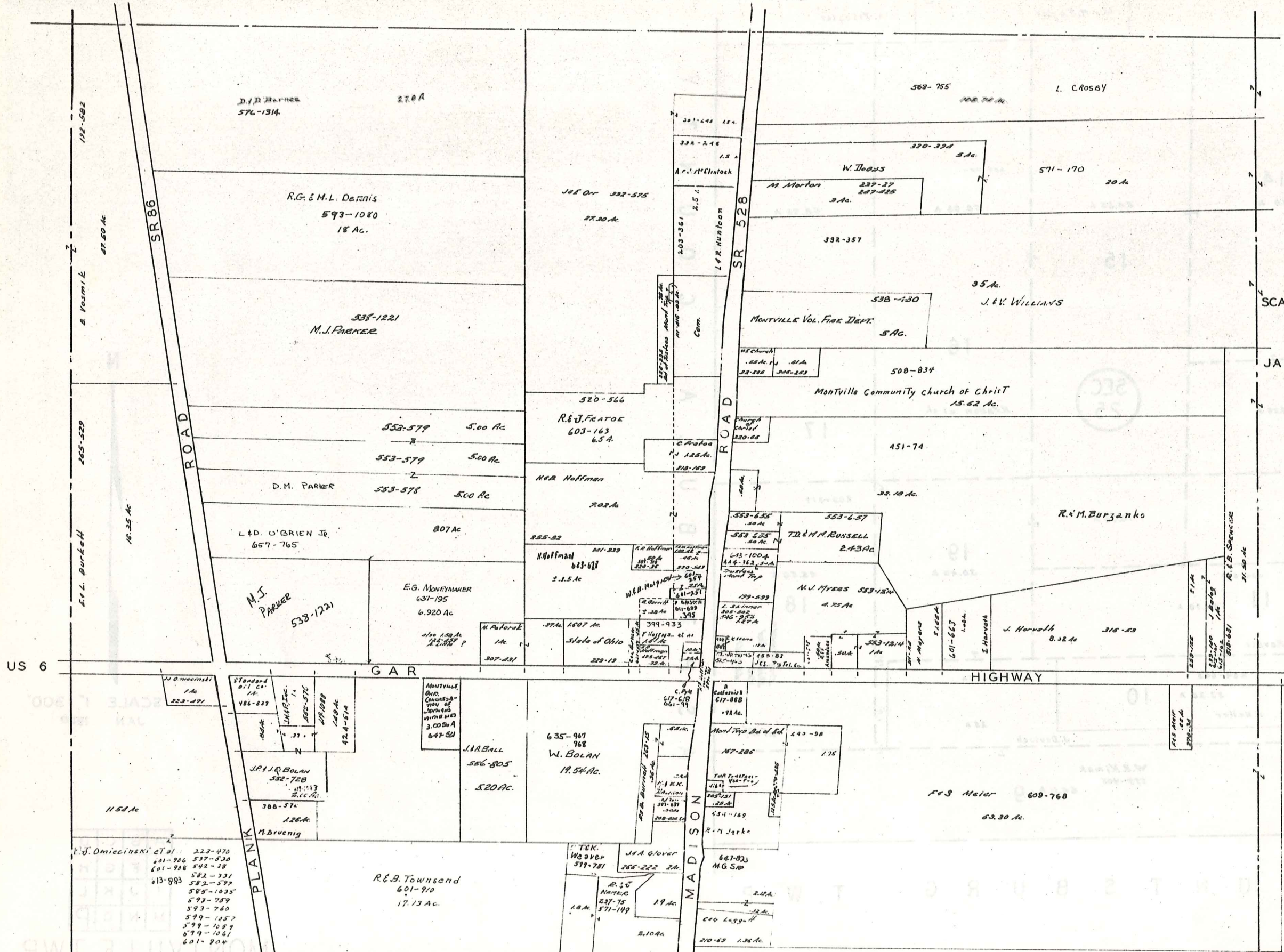


SCALE 1" 300'
 JAN 1980

A	B	C	D
E	F	G	H
I	J	K	L
M	N	O	P

MONTVILLE TWP.
 310

MONTVILLE SECTION 13 TWP



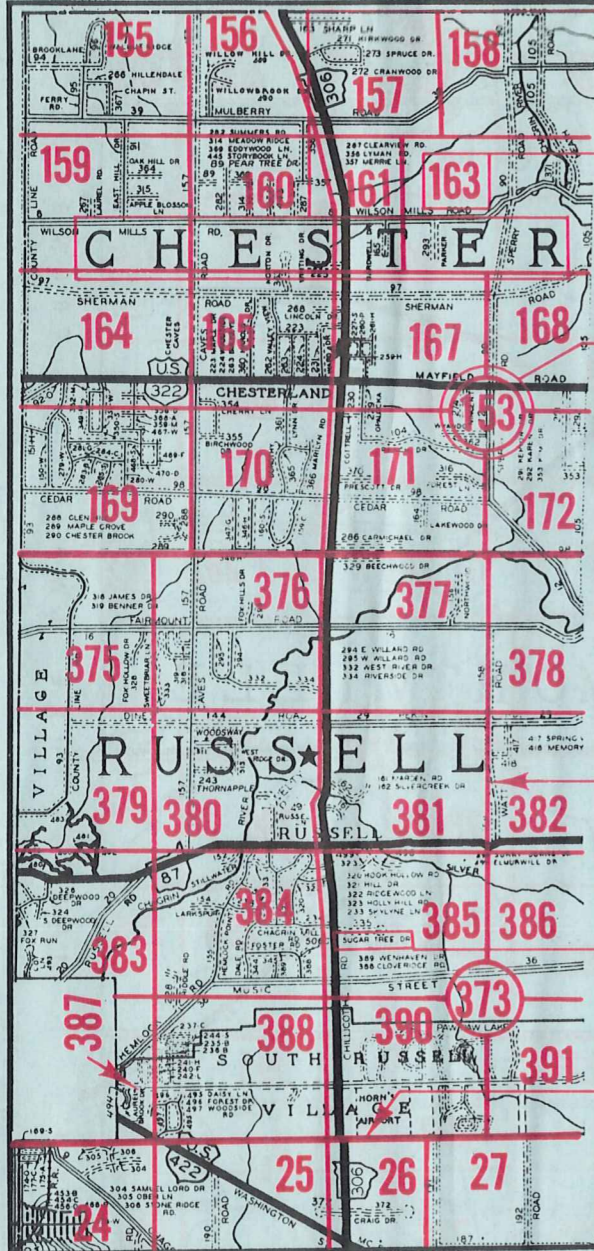
SCALE 1" = 200'

JAN. 1, 1980

US 6 HIGHWAY

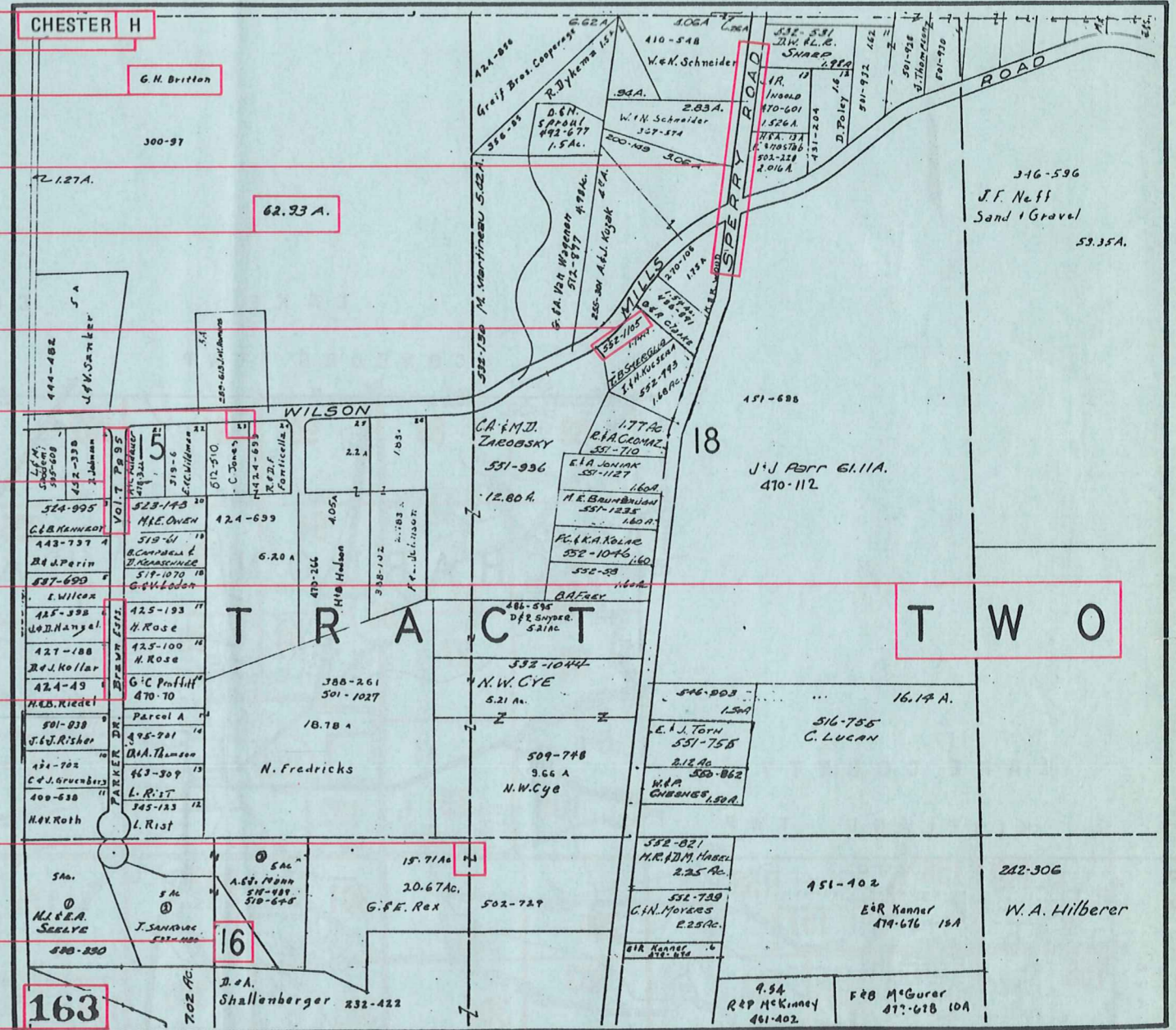
Explanation and Use Sheet for Geauga County, Ohio

SAMPLE (PARTIAL) COUNTY INDEX MAP



- Township Name
- Map Page Number (Or Letter)
- Owners Name
- Street Name
- Acreage
- Municipality Index Beginning Atlas Page Number
- Deed Book & Page
- Subdivision Lot Number
- Plat Book & Page
- Tract Number
- Atlas Page Boundary
- Subdivision Name
- Street Name
- Denotes Continuous Ownership
- Municipality Index Atlas Page Boundary
- Tract Lot Number
- Atlas Page Number

SAMPLE (PARTIAL) MAP PAGE



USE OF THE MAP VOLUME

1. LOCATE THE GENERAL AREA OF INTEREST ON THE COUNTY INDEX MAP, ATLAS PAGE 'B'.
2. A. IF PROPERTY IS IN A TOWNSHIP, NOTE THE ATLAS PAGE NUMBER. TURN TO THE PAGE INDICATED AND LOCATE SPECIFIC PARCEL OF INTEREST.
NOTE: ON SOME MAPS YOU MAY BE REFERRED TO A DETAIL SHEET SHOWING AN ENLARGEMENT OF THE AREA. THESE MAPS ARE FOUND AT THE END OF THE REGULAR MAP PAGES IN EACH TOWNSHIP EITHER IN ALPHABETICAL OR NUMERICAL SEQUENCE.
- B. IF PROPERTY IS IN A MUNICIPALITY, REFER TO THE TABLE OF CONTENTS, ATLAS PAGE 'C', AND NOTE THE BEGINNING ATLAS PAGE NUMBER FOR THE MUNICIPALITY OF INTEREST.
 - (1) TURN TO THE PAGE INDICATED. ON THIS PAGE WILL APPEAR AN INDEX MAP FOR THAT MUNICIPALITY.
 - (2) LOCATE SPECIFIC AREA OF INTEREST AND NOTE THE MAP PAGE NUMBER.
NOTE: DO NOT CONFUSE THE MAP PAGE NUMBER WITH THE ATLAS PAGE NUMBER IN THESE MUNICIPALITIES.
 - (3) FOLLOW EITHER ALPHABETICAL OR NUMERICAL SEQUENCE TO THE MAP PAGE INDICATED AND LOCATE SPECIFIC PARCEL OF INTEREST.